



Smart Motors and Conveyors

See the future now...

- Integrated controller, no drive needed in control panel
- Lower 24, 48, or 70 vdc input power, no 3 phase 230 vac needed
- Internal motion profiles
- Much Smaller footprint
- IP65 Sealed Motor
- Allen Bradley Ethernet I/P (AOI's)
- Built-in Encoder for precision
- StepServo Algorithm to maintain speed on load changes
- M12 Cable quick connectors
- Much Lower cost



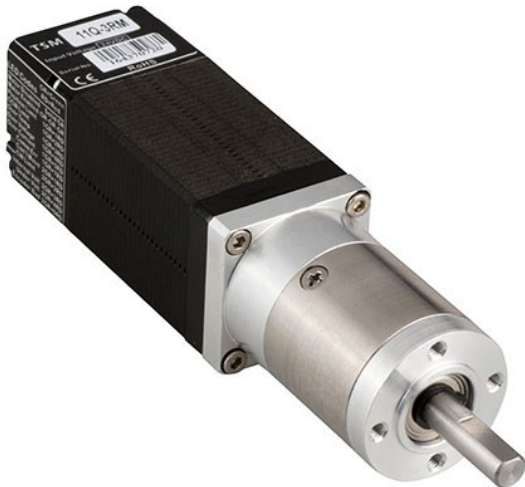
Easier Network Connections for TSM11 StepSERVO

Close Loop Stepper that runs cooler and with less noise than traditional steppers.

Ethernet Modbus TCP Communications



Planetary Gearheads for greater torque



In addition to enhanced communication connectors, TSM11 StepSERVO Integrated Motors can be further equipped with planetary gearheads for applications demanding greater torque. The [PH Planetary Gearheads](#) offer ratios from 4:1 to 22:1, with additional ratios available upon request. These planetary gearboxes feature an all-steel gear train for long life and an attractive list price.

SS-EC Drives and Motors - StepSERVO Drives and Motors for use in EtherCAT Networks

- EtherCAT® network control using CANopen over EtherCAT (CoE) adhering to CiA 402
 - StepSERVO closed loop stepper technology featuring space vector current control
 - Peak torques for greater acceleration and throughput
 - Higher efficiency, lower power consumption than open loop step motors
- Motor frame sizes NEMA 11, 17, 23, 24 and 34

